



MONTHLY MEMBERSHIP PROGRESS REPORT

District 2 S5

Results as of: 05/31/2018

GMT: JOE AL PICONE

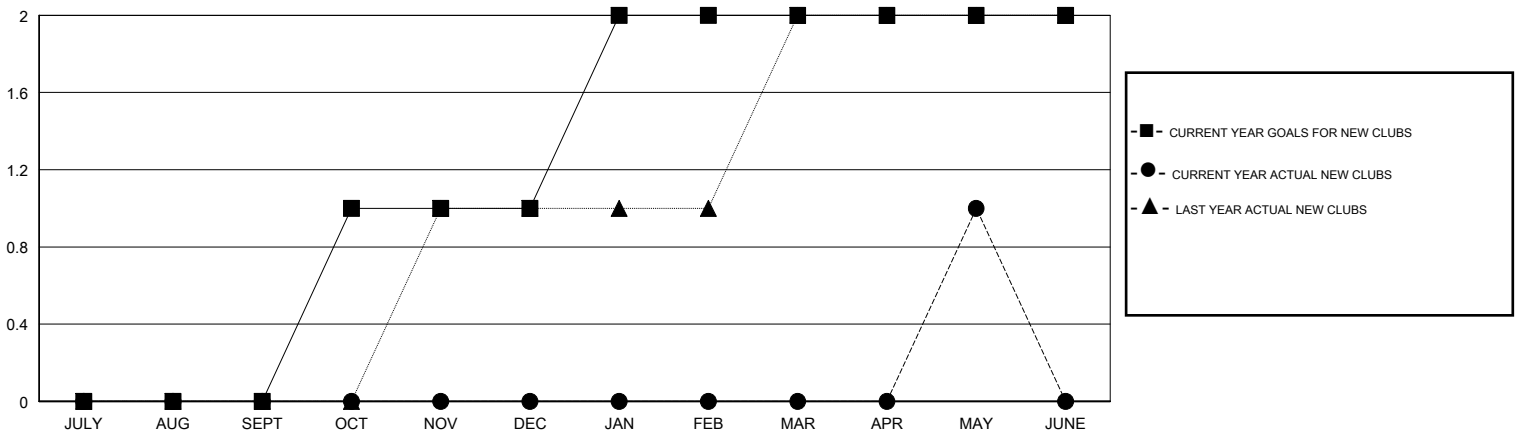
LOCATION TEXAS

GMT CA

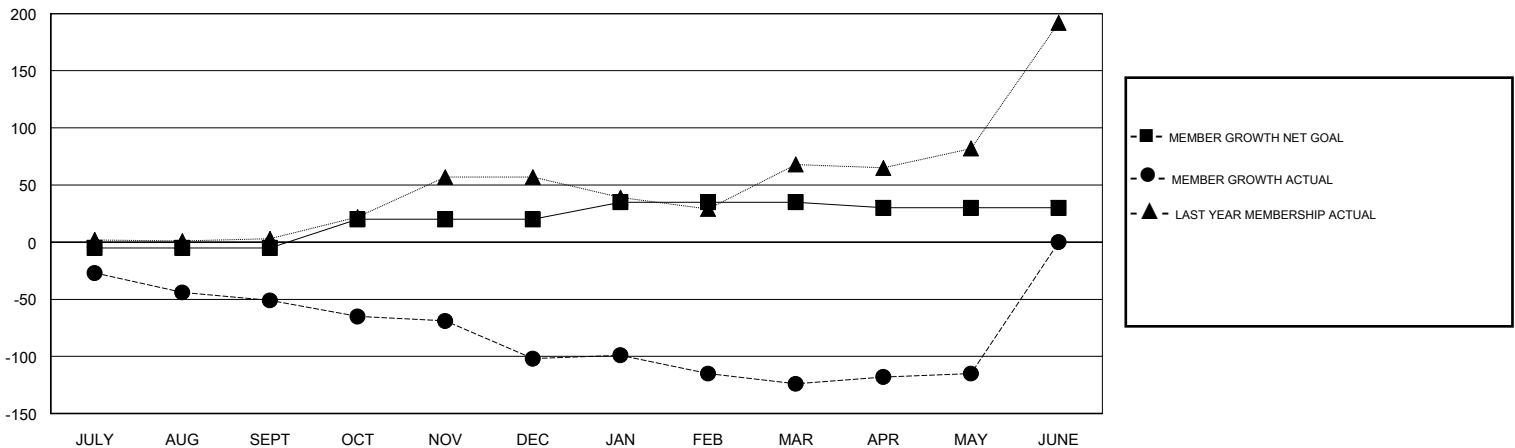
Clubs			
RESULTS FOR 2017-2018			
QUARTER	NEW CLUB GOAL	NEW CLUBS	DROPPED CLUBS
JULY/AUG/SEPT	0	0	0
OCT/NOV/DEC	1	0	1
JAN/FEB/MAR	1	0	0
APR/MAY/JUNE	0	1	0

Members			
RESULTS FOR 2017-2018			
QUARTER	MEMBER GROWTH NET GOAL	MEMBER GROWTH ACTUAL	DROPPED MEMBERS ACTUAL (including transfers)
JULY/AUG/SEPT	-5	43	90
OCT/NOV/DEC	25	65	112
JAN/FEB/MAR	15	77	95
APR/MAY/JUNE	-5	66	53

GOALS AND ACTUAL NEW CLUBS CUMULATIVE



GOALS AND ACTUAL MEMBERS CUMULATIVE



DROPPED CLUBS: 1	43 CLUBS OF 62 ADDED 1 OR MORE NEW MEMBERS	<u>GENDER DISTRIBUTION</u>	
		MALE	1,505 (63.45%)
		FEMALE	867 (36.55%)
		Women Percentage Fiscal Year Goal: 20%	
<u>DROPPED MEMBERS</u>		TOTAL FAMILY UNIT MEMBERS	392
DECEASED	26	FAMILY MEMBERS PAYING HALF DUES	198
CLUB CANCELLED	15		
OTHER	309		
TOTAL	350		

[CLICK HERE FOR CUMULATIVE MEMBERSHIP DATA](#)